

210 FLAGG FACILITIES GROUP SPACE EFFICIENCY STUDY & RENOVATION

210 FLAGG ROAD
 KINGSTON, RHODE ISLAND
 OCP PROJECT ID#: KC.G.210F.2022.001



PROJECT
 LOCATION

DRAWING LIST		REVISIONS
GENERAL		
G0.00	COVER SHEET	
G1.12	LIFE SAFETY PLAN AND CODE DATA - SECOND FLOOR	
ARCHITECTURE		
A0.10	GENERAL INFORMATION	
A2.21.1	SECOND FLOOR DEMOLITION PLAN	
A2.31.1	SECOND FLOOR REFLECTED CEILING PLAN - DEMO	
A2.11.1	SECOND FLOOR CONSTRUCTION ANNOTATION PLAN	
A2.1.1	SECOND FLOOR DIMENSION PLAN	
A3.11.1	REFLECTED CEILING PLAN SECOND FLOOR	
A8.10	DOOR SCHEDULES, AND CASEWORK ELEVATIONS & DETAILS	
I2.12.1	SECOND FLOOR FINISH PLAN	
FIRE PROTECTION		
FP0.01	FIRE PROTECTION LEGEND, SCHEDULES & DETAILS	
FP1.10	FIRE PROTECTION SECOND FLOOR DEMOLITION PLAN	
FP2.10	FIRE PROTECTION SECOND FLOOR PLAN	
PLUMBING		
P1.00	SECOND FLOOR PLUMBING NEW WORK PLAN	
MECHANICAL		
M0.01	MECHANICAL LEGEND	
M0.100	SECOND FLOOR MECHANICAL DEMOLITION PLAN	
M1.00	SECOND FLOOR MECHANICAL NEW WORK PLAN	
M6.00	MECHANICAL SCHEDULES AND DETAILS	
ELECTRICAL		
E0.01	ELECTRICAL SPECIFICATION AND DETAILS	
E1.00	ELECTRICAL SECOND FLOOR DEMOLITION POWER PLAN	
E1.10	ELECTRICAL SECOND FLOOR POWER PLAN	
E2.00	ELECTRICAL SECOND FLOOR DEMOLITION LIGHTING PLAN	
E2.10	ELECTRICAL SECOND FLOOR LIGHTING PLAN	
FIRE ALARM		
FA1.00	ELECTRICAL SECOND FLOOR DEMOLITION FIRE ALARM PLAN	
FA1.10	ELECTRICAL SECOND FLOOR FIRE ALARM PLAN	

THE
 UNIVERSITY
 OF RHODE ISLAND
 THINK BIG WE DO

**TECTON
 ARCHITECTS**
 317 IRON HORSE WAY
 SUITE 101
 PROVIDENCE, RI 02908



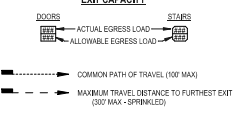
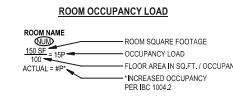
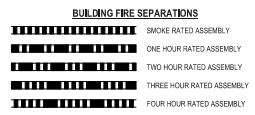
B2Q
B2Q ASSOCIATES
 100 BURTT ROAD, SUITE 212
 ANDOVER, MA 01810

CONSTRUCTION DOCUMENTS
 9/26/2024

PROJECT NAME: 210 FLAGG FACILITIES GROUP SPACE EFFICIENCY STUDY & RENOVATION

PROJECT NUMBER: URI72IN

CODE / EGRESS LEGEND



- BUILDING CODES**
- ALL CONSTRUCTION SHALL CONFORM WITH THE FOLLOWING CODES:
- 2018 RHODE ISLAND INTERNATIONAL CODE AND BY REFERENCE:**
- 2018 RHODE ISLAND STATE FIRE SAFETY CODE**
1. RHODE ISLAND LIFE SAFETY CODES (APRIL 15) - 2018 EDITION OF THE RHODE ISLAND FIRE SAFETY CODE
 2. NFPA 704, Chapter 2020.7
- 2018 RHODE ISLAND STATE BUILDING CODE**
1. 2018 INTERNATIONAL BUILDING CODES (IBC)
 2. 2018 INTERNATIONAL PLUMBING CODES (IPC)
 3. 2018 INTERNATIONAL MECHANICAL CODES (IMC)
 4. 2018 NATIONAL ELECTRICAL CODES (NFPA 70) (NEC)
 5. 2018 INTERNATIONAL ENERGY CONSERVATION CODES (IECC)
 6. EQUIVALENCE ACCESSIBLE AND USABLE BUILDINGS AND FACILITIES (AUAB)

PROJECT SYNOPSIS

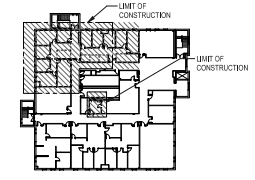
THE SCOPE OF THE WORK LOCATED AT THE UNIVERSITY OF RHODE ISLAND SECOND FLOOR OF 210 FLAGG ROAD IS SUMMARIZED AS FOLLOWS:

SECOND FLOOR IS 15,896 S.F., PROJECT AREA IS 2,895 S.F.

THE BUILDING IS 2B CONSTRUCTION, SPRINKLERED, B - BUSINESS OCCUPANCY

SCOPE OF WORK SUMMARY:

A LEVEL 2 RENOVATION, 2,895 S.F., OF THE SECOND FLOOR OF A 2 STORY BUILDING TO CREATE OFFICES WITH THE CONVERSION OF ROOMS 202, 203, 204 AND 205, TO AN OFFICE SUITE, AND RENOVATION OF EXISTING BREAKROOM 214.



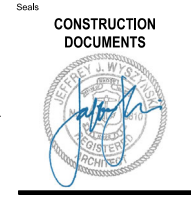
KEY PLAN
1" = 50'-0"



NOTES:
 This drawing is the property of Tecton Architects [Inc.]. The use, reuse or reproduction of this drawing for any purpose whatsoever without an expressed written agreement between Tecton Architects [Inc.] and the user is prohibited. Rights to use the information on this sheet are not transferred and no warranty has been expressed or implied. Any rights so granted are non-contractible to other parties without the prior expressed written consent of Tecton Architects [Inc.]
 © 2024 Tecton Architects [Inc.]

Client/ Contractor
UNIVERSITY OF RHODE ISLAND
 KINGSTON, RI, 02881

210 FLAGG FACILITIES GROUP SPACE EFFICIENCY STUDY & RENOVATION
 210 FLAGG ROAD
 KINGSTON, RHODE ISLAND
 OCP PROJECT ID#: KC.G.210F.2022.001



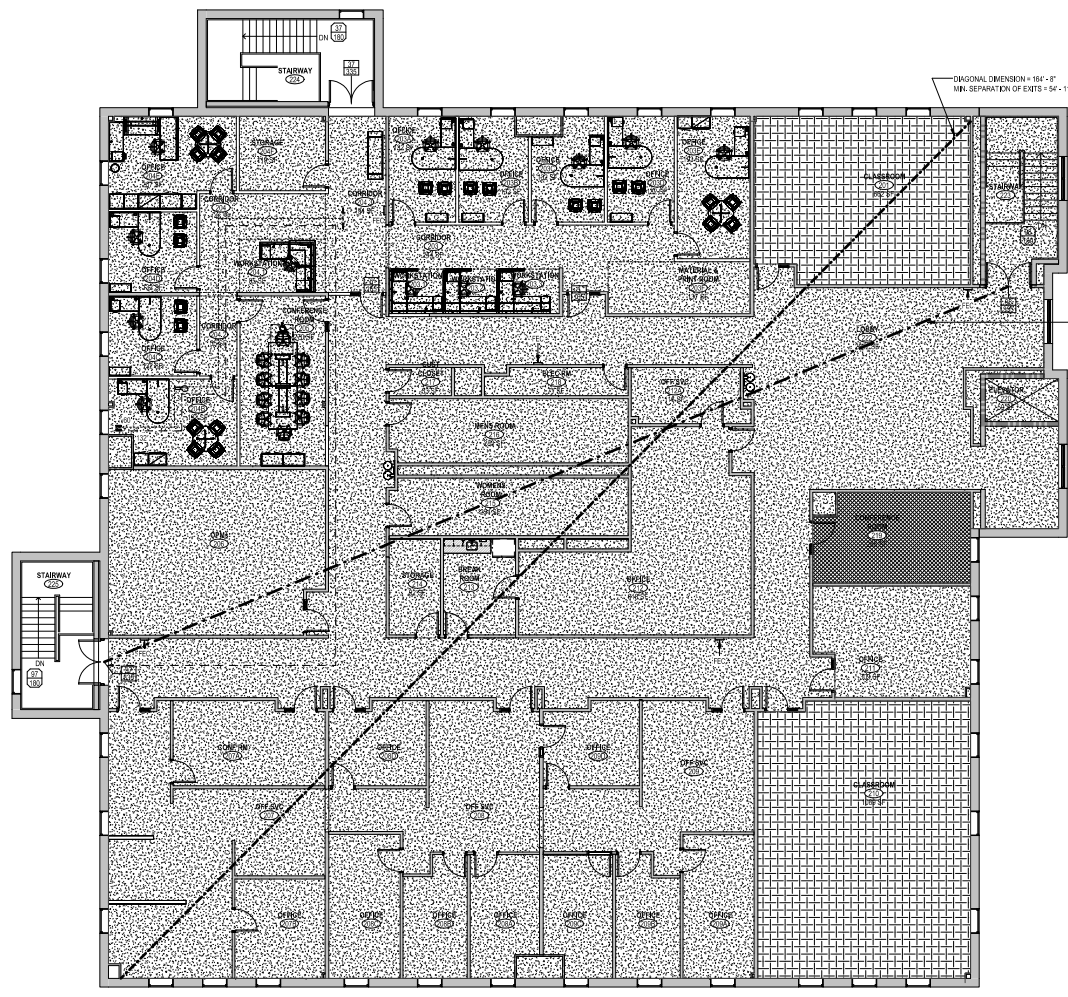
Issues / Revisions

No.	Date	Description
001	10/20/23	CONSTRUCTION DOCUMENTS CONSTRUCTION DOCUMENTS

Drawing Title
LIFE SAFETY PLAN AND CODE DATA - SECOND FLOOR

Project Manager: PE Project No: URF22N
 Project Architect: PB Construction Leader: CB
 Project Designer: CB Peer Reviewer: RA

Drawing Number
G1.12



G10 SECOND FLOOR EGRESS PLAN
1/8" = 1'-0"

OCCUPANT LOAD CALCULATIONS per IBC...

FUNCTION OF SPACE	AREA	OCCUPANCY LOAD FACTOR	TOTAL OCCUPANTS
ASSEMBLY WITHOUT FIXED SEATS - UNCONCENTRATED (TABLES & CHAIRS)	506 SF	15	17
ASSEMBLY WITHOUT FIXED SEATS - UNCONCENTRATED (TABLES & CHAIRS)	255 SF	15	17

ASSEMBLY WITHOUT FIXED SEATS - UNCONCENTRATED (TABLES & CHAIRS)

BUSINESS AREAS	538 SF	100	4
BUSINESS AREAS	1275 SF	100	122
BUSINESS AREAS	1245 SF	200	126
EDUCATIONAL - CLASSROOM AREA	1080 SF	30	36
EDUCATIONAL - CLASSROOM AREA	953 SF	30	30
EDUCATIONAL - CLASSROOM AREA	1932 SF	40	88
GRAND TOTAL	14488 SF	255	252

- FUNCTION OF SPACE**
- ASSEMBLY WITHOUT FIXED SEATS - UNCONCENTRATED (TABLES & CHAIRS)
 - BUSINESS AREAS
 - EDUCATIONAL - CLASSROOM AREA

PLUMBING FIXTURE CALCULATIONS BY ACTUAL OCCUPANT LOAD PER 2018 IPC TABLE 403.1(1)

USE GROUP	DESCRIPTION	LOAD	WATER CLOSETS		LAVATORIES		BATHTUBS &...		DRINKING...		SERVICE SINKS				
			RATIO	MALE	RATIO	FEMALE	RATIO	QTY	RATIO	QTY					
ASSEMBLY (A-0)	AUDITORIUMS WITHOUT PERMANENT SEATING, ART GALLERIES, EXHIBITION HALLS, MOVIE/RECORDING HALLS, LIBRARIES, ARCADES & GYMNASIUMS	17	1 PER 125	0.07	1 PER 65	0.14	1 PER 200	0.05	1 PER 200	0.05	N/A	N/A	1 PER 500	0.03	1 SERVICE SINK
BUSINESS (B)	BUILDINGS FOR THE TRANSACTION OF BUSINESS, PROFESSIONAL SERVICES, OTHER SERVICES INVOLVING MERCHANDISE, OFFICE BUILDINGS, BANKS, LIGHT INDUSTRIAL & SIMILAR USES	126	1 PER 25 FOR THE FIRST 50 AND 1 PER 50 FOR THE REMAINDER EXCEEDING 50	2.26	1 PER 25 FOR THE FIRST 50 AND 1 PER 50 FOR THE REMAINDER EXCEEDING 50	2.26	1 PER 40 FOR THE FIRST 50 AND 1 PER 80 FOR THE REMAINDER EXCEEDING 50	1.58	1 PER 40 FOR THE FIRST 50 AND 1 PER 80 FOR THE REMAINDER EXCEEDING 80	1.58	N/A	N/A	1 PER 100	1.26	1 SERVICE SINK
EDUCATIONAL (E)	EDUCATIONAL FACILITIES	89	1 PER 50	0.45	1 PER 50	0.45	1 PER 50	0.45	1 PER 50	0.45	SEE SECTION 411	1 PER 100	0.89	1 SERVICE SINK	
SUBTOTAL			2.78		2.65		2.07		0.50			1.38		1.00	
REQUIRED TOTALS			3		3		3		3			2		1	
QUANTITY PROVIDED			3		6		5		0			2		1	
ADJUSTED QUANTITIES			3												

UNRALS-3 provided

C:\Users\charlie\Documents\URF22N_Constr\G10_210Flagg2024.dwg

10/20/2024 8:20:29 AM